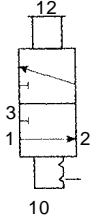
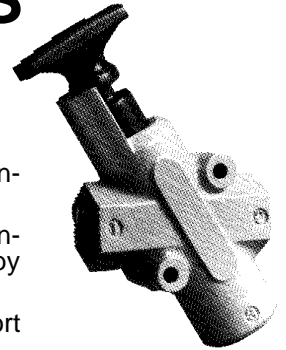


# LOCKOUT VALVES

PNEUMATICS



## \*MEETS OSHA STANDARDS\*



### DESCRIPTION and APPLICATION

These 3-way valves are used in systems for compliance with OSHA standard 29 CFR 1910.147 for general safety.

By pushing the handle inward you block in-line pressure and relieve down-line system pressure after "locking" with a padlock, which ensures safety by preventing accidental actuation of cylinders.

By removing your padlock and pulling handle outward Port 1 is open to Port 2 for normal free flow of air through system at pressure.

The padlock capability ensures that only the authorized person can turn the system on and off.

#### STOCK NO. SD04500

3/8", 0-250 PSI,  
ALUMINUM BODY

#### STOCK NO. SD04505

1/2", 0-250 PSI,  
ALUMINUM BODY

#### STOCK NO. SD04508

3/4", 0-250 PSI,  
ALUMINUM BODY

#### STOCK NO. SD04510

1", 0-250 PSI,

LOCKOUT VALVE				ORDER INFORMATION	
PORT SIZE	Cv PORT 1-PORT2	Cv PORT 2- PORT 3	REFERENCE	STOCK NUMBER	PRICE
3/8"	4.3	9.0	LV3NA8	SD04500	99.20
1/2"	7.7	11.3	LV4NA8	SD04505	99.20
3/4"	9.5	9.0	LV6NA8	SD04508	99.20
1"	10.2	8.8	LV8NA8	SD04510	136.30

# BALL VALVE WITH LOCKOUT FEATURE

PNEUMATICS



### INFORMATION & APPLICATION

Forged brass body, hard chrome plated full port ball designed to comply with OSHA standards 1910-147 requirements in pneumatic, hydraulic, and mechanical installations, latch-lock handle standard for positive lockout before maintenance is performed. Temperature range -4° to +350°F, .UL. A.G.A. C.G.A. O.S.H.A. approved.

BALL WITH VALVE LOCKOUT			ORDER INFORMATION	
PORT SIZE	PSI	REFERENCE	STOCK NUMBER	PRICE
1/4	200	948-131	3L01050	29.63
3/8	200	948-132	3L01060	29.63
1/2	200	948-133	3L01070	29.74
3/4	200	948-134	3L01080	37.73
1	200	948-135	3L01090	53.73

#### GRAND RAPIDS

TOLL FREE 1-800-968-0188  
PHONE: (616) 949-8844  
FAX: (616) 949-6598

#### KALKASKA

TOLL FREE 1-800-355-4338  
PHONE: (616) 258-4338  
FAX: (616) 258-2696

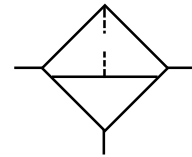
# AIR LINE FILTERS

PNEUMATICS



## FEATURES

- Excellent water removal efficiency.
- Unique deflector plate that creates swirling of the air stream ensuring maximum water and dirt separation.
- Easily disassembled for servicing without use of tools.
- Fingertip operated drain.



1 Oz. Bowl  
5 Micron Element

MINIATURE AIR LINE FILTERS			ORDER INFORMATION	
PORT SIZE	SCFM (FLOW)	REFERENCE	STOCK NUMBER	PRICE
1/8"	22	14F01BB	SE20045	26.90
1/4"	24	14F11BB	SE20040	26.90

## FEATURES

- Excellent water removal efficiency.
- Unique deflector plate that creates a swirling of the air stream ensuring maximum water and dirt separation.
- Large filter element surface guarantees low pressure drop and increased element life.
- 40 micron filter element standard, 5 micron and absorber available.
- High Flow: 1/8" - 32 SCFM §  
1/4" - 54 SCFM §  
3/8" - 70 SCFM §



2 Oz. Bowl  
40 Micron Element

ECONOMY AIR LINE FILTERS			ORDER INFORMATION	
PORT SIZE	SCFM (FLOW)	REFERENCE	STOCK NUMBER	PRICE
1/4"	54	05F12AA	SE40055	33.60
3/8"	70	05F22AA	SE40060	33.60

## FEATURES

- Excellent water removal efficiency.
- Unique deflector plate and shroud creates a swirling of the air stream ensuring maximum water and dirt separation.
- Large filter element surface guarantees low pressure drop and increased element life.
- Optional Push 'N' Drain requires only fingertip touch to drain. Optional automatic filter drain available.
- Shown with recommended metal bowl guard.



4.4 Oz. Bowl  
40 Micron Element

COMPACT AIR LINE FILTERS			ORDER INFORMATION	
PORT SIZE	SCFM (FLOW)	REFERENCE	STOCK NUMBER	PRICE
1/4"	53	06F12AC	SE20081	55.00
3/8"	80	06F22AC	SE20119	55.00
1/2"	85	06F32AC	SE20239	55.00

## FEATURES

- Excellent water removal efficiency.
- Unique deflector plate and shroud creates a swirling of the air stream ensuring maximum water and dirt separation.
- Large filter element surface guarantees low pressure drop and increased element life.
- Optional Push 'N' Drain requires only fingertip touch to drain. Optional automatic filter drain available.
- Shown with recommended metal bowl guard.



7.2 Oz. Bowl  
40 Micron Element

STANDARD AIR LINE FILTERS			ORDER INFORMATION	
PORT SIZE	SCFM (FLOW)	REFERENCE	STOCK NUMBER	PRICE
3/8"	100	07F22AC	SE20201	75.30
1/2"	130	07F32AC	SE20131	75.30
3/4"	145	07F42AC	SE20241	75.30

### GRAND RAPIDS

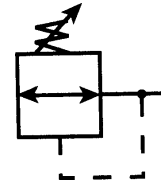
TOLL FREE 1-800-968-0188  
PHONE: (616) 949-8844  
FAX: (616) 949-6598

### KALKASKA

TOLL FREE 1-800-355-4338  
PHONE: (616) 258-4338  
FAX: (616) 258-2696



## PREP-AIR II



### FEATURES

- Unbalanced poppet standard.
- Solid control piston with lip seal for extended life.
- Non-rising adjusting knob.
- Compact, 2.9 inch (74 mm) high by 1.65 inch (42 mm) wide.
- Easily serviced.



MINIATURE AIR LINE REGULATOR			ORDER INFORMATION	
PORT SIZE	SCFM (FLOW)	REFERENCE	STOCK NUMBER	PRICE
1/8"	13	14R013FC	SE20990	20.50
1/4"	15	14R113FC	SE21000	20.50

### FEATURES

- Secondary aspiration plus balanced poppet provides quick response and accurate pressure regulation.
- Rolling diaphragm for extended life.
- Removable non-rising knob for panel mounting and tamper resistance.
- Easily serviced.
- Reverse Flow.
- High Flow: 1/8" - 30 SCFM §  
1/4" - 30 SCFM §  
3/8" - 40 SCFM §



ECONOMY AIR LINE REGULATOR			ORDER INFORMATION	
PORT SIZE	SCFM (FLOW)	REFERENCE	STOCK NUMBER	PRICE
1/4"	30	05R113AD	SE40105	28.80
3/8"	40	05R213AD	SE40110	28.80

### FEATURES

- Secondary aspiration plus balanced poppet provides quick response and accurate pressure regulation.
- Rolling diaphragm for extended life.
- Two high flow 1/4" gauge ports can be used as additional outlets.
- Easily serviced.
- Removable knob for panel mounting and tamper resistance.



COMPACT AIR LINE REGULATOR				ORDER INFORMATION	
PORT SIZE	SCFM (FLOW)	PSIG RANGE	REFERENCE	STOCK NUMBER	PRICE
1/4"	50	0-250	06R115AC	SE21020	43.90
1/4"	53	0-125	06R113AC	SE21030	42.10
3/8"	60	0-125	06R213AC	SE21040	42.10
1/2"	75	0-125	06R313AC	SE21035	42.10

### FEATURES

- Secondary aspiration plus balanced poppet provides quick response and accurate pressure regulation.
- Rolling diaphragm for extended life.
- Two high flow 1/4" gauge ports can be used as additional outlets.
- Easily serviced.
- Removable knob for panel mounting and tamper resistance.



STANDARD AIR LINE REGULATOR				ORDER INFORMATION	
PORT SIZE	SCFM (FLOW)	PSIG RANGE	REFERENCE	STOCK NUMBER	PRICE
3/8"	70	0-125	07R213AC	SE21060	66.00
1/2"	90	0-125	07R313AC	SE21070	66.00
3/4"	90	0-125	07R413AC	SE21080	66.00

\*OPTIONAL: FOR ACCESSORIES, SEE PAGE 6

#### GRAND RAPIDS

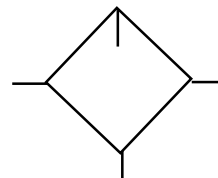
TOLL FREE 1-800-968-0188  
PHONE: (616) 949-8844  
FAX: (616) 949-6598

#### KALKASKA

TOLL FREE 1-800-355-4338  
PHONE: (616) 258-4338  
FAX: (616) 258-2696



## PREP-AIR PRO



### FEATURES

- Proportional oil delivery over a wide range of air flows.
- Generates oil particles of 5 micron smaller downstream to lubricate systems having complex piping arrangements.
- Precision needle valve assures repeatable oil delivery and provides simple adjustment of delivery rate.
- Ideal for low and high flow applications with changing air flow.
- Transparent sight dome for 360° visibility.
- Removable drip control knob for tamper resistance.

- High Flow: 1/8" - 23 SCFM §  
1/4" - 40 SCFM §  
3/8" - 40 SCFM §

CONOMY AIR LINE LUBRICATOR			ORDER INFORMATION	
PORT SIZE	SCFM (FLOW)	REFERENCE	STOCK NUMBER	PRICE
1/4"	40	15L12NA	SE40255	44.00
3/8"	40	15L22NA	SE40260	44.00



### FEATURES

- Proportional oil delivery over a wide range of air flows.
- Precision needle valve assures repeatable oil delivery and provides simple adjustment of delivery rate.
- Bowl can be filled while air line is under pressure.
- Transparent sight dome for 360° visibility.
- Shown with recommended metal bowl guard.

COMPACT AIR LINE LUBRICATOR			ORDER INFORMATION	
PORT SIZE	SCFM (FLOW)	REFERENCE	STOCK NUMBER	PRICE
1/4"	40	06L12BE	SE21600	66.90
3/8"	60	06L22BE	SE21605	66.90
1/2"	90	06L32BE	SE21610	66.90



### FEATURES

- Proportional oil delivery over a wide range of air flows.
- Precision needle valve assures repeatable oil delivery and provides simple adjustment of delivery rate.
- Bowl can be filled while air line is under pressure.
- Transparent sight dome for 360° visibility.
- Shown with recommended metal bowl guard.

STANDARD AIR LINE LUBRICATOR			ORDER INFORMATION	
PORT SIZE	SCFM (FLOW)	REFERENCE	STOCK NUMBER	PRICE
3/8"	60	07L22BE	SE21631	81.10
1/2"	90	07L32BE	SE21651	81.10
3/4"	90	07L42BE	SE21661	81.10

**\*OPTIONAL: FOR ACCESSORIES, SEE PAGE 6**

#### GRAND RAPIDS

TOLL FREE 1-800-968-0188  
PHONE: (616) 949-8844  
FAX: (616) 949-6598

#### KALKASKA

TOLL FREE 1-800-355-4338  
PHONE: (616) 258-4338  
FAX: (616) 258-2696

# LOCKOUT VALVES

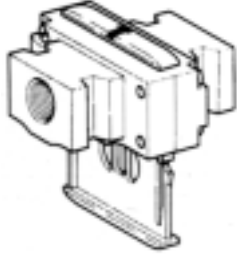
PNEUMATICS



**STOCK NO. SE03320**  
3/8" PORTS

**STOCK NO. SE03325**  
1/2" PORTS

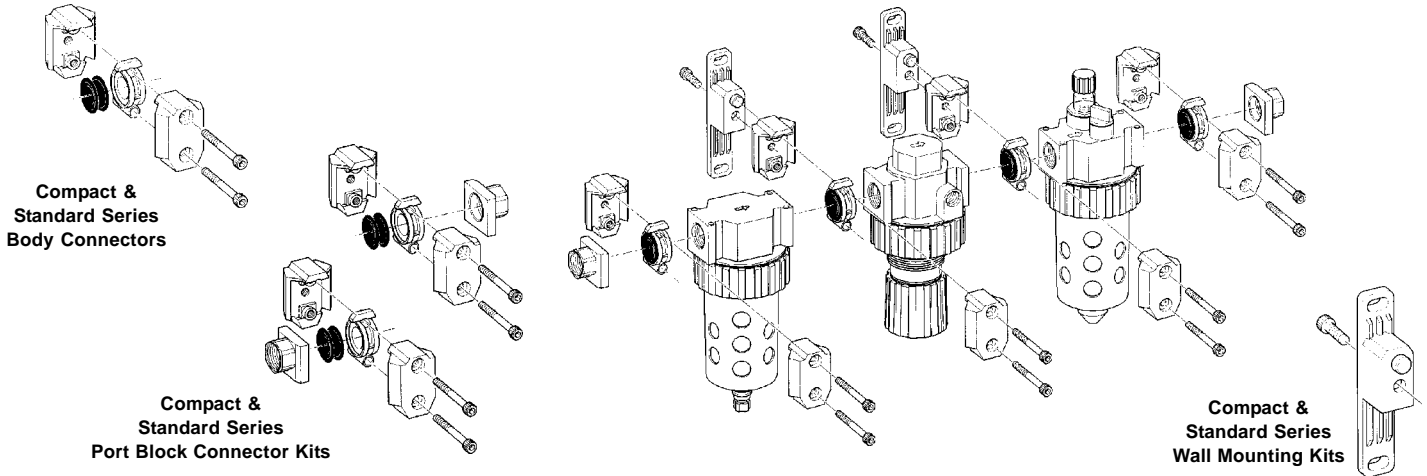
**GENERAL DESCRIPTION**  
Economy Model  
Satisfies **O.S.H.A.**  
Standard 29 CFR  
1910.147  
3-way



LOCKOUT VALVE				ORDER INFORMATION	
SERIES	PORT SIZE	SCFM (FLOW)	REFERENCE	STOCK NUMBER	PRICE
06	3/8"	140	PS756P	<b>SE03320</b>	<b>36.60</b>
07	1/2"	140	PS856P	<b>SE03325</b>	<b>44.70</b>

# MODULAR ACCESSORIES

PNEUMATICS



## ORDER INFORMATION

SERIES	BODY CONNECTORS		PORT BLOCK CONNECTOR KITS		WALL MOUNTING KITS	
	STOCK NUMBER	PRICE	STOCK NUMBER	PRICE	STOCK NUMBER	PRICE
05 SERIES	SE03350	<b>6.60</b>	—	—	SE03351	<b>5.10</b>
06 SERIES	SE03310	<b>9.00</b>	—	—	SE03315	<b>8.80</b>
06 SERIES 3/8"	—	—	SE03307	<b>25.90</b>	—	—
07 SERIES	SE03331	<b>9.60</b>	—	—	SE03315	<b>8.80</b>
07 SERIES 3/8"	—	—	SE03329	<b>25.50</b>	—	—
07 SERIES 3/4"	—	—	SE03330	<b>27.00</b>	—	—

**GRAND RAPIDS**

TOLL FREE 1-800-968-0188  
PHONE: (616) 949-8844  
FAX: (616) 949-6598

**KALKASKA**

TOLL FREE 1-800-355-4338  
PHONE: (616) 258-4338  
FAX: (616) 258-2696