

CHECK VALVES

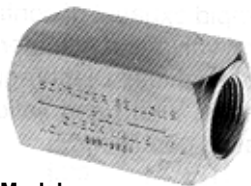
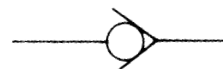
PNEUMATICS



**Schrader
Bellows**

GENERAL INFORMATION

Body, brass, 250 psi max.



Premium Model

CHECK VALVE			ORDER INFORMATION	
PORT SIZE	SCFM (FLOW)	REFERENCE	STOCK NUMBER	PRICE
1/4"	75	00339 3001	SH00425	21.90
3/8"	143	00339 3002	SH00426	24.20

GENERAL INFORMATION

Brass body with stainless steel poppet, 2000 psi max.



Economy Model

CHECK VALVE		ORDER INFORMATION	
PORT SIZE	REFERENCE	STOCK NUMBER	PRICE
1/4"	SPC 400B	SH01770	14.50
3/8"	SPC 600B	SH01775	19.50
1/2"	SPC 800B	SH01780	24.80

NEEDLE VALVES

PNEUMATICS



**Schrader
Bellows**

GENERAL INFORMATION

Precision control in both directions, brass, 250 max psi.



Premium Model

NEEDLE VALVE			ORDER INFORMATION	
PORT SIZE	SCFM (FLOW)	REFERENCE	STOCK NUMBER	PRICE
1/4"	35	00338 1101	SH00366	23.90
3/8"	64	00338 1102	SH00367	32.90

GENERAL INFORMATION

Brass, 2000 max psi.



Economy Model

NEEDLE VALVE		ORDER INFORMATION	
PORT SIZE	REFERENCE	STOCK NUMBER	PRICE
1/8"	SPN 200B	SH02035	15.40
1/4"	SPN 400B	SH02040	16.00
3/8"	SPN 600B	SH02045	21.60

GRAND RAPIDS

TOLL FREE 1-800-968-0188
PHONE: (616) 949-8844
FAX: (616) 949-6598

KALKASKA

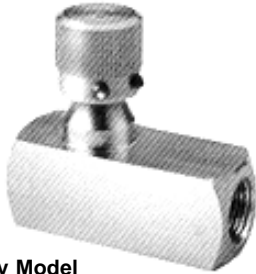
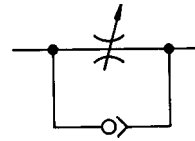
TOLL FREE 1-800-355-4338
PHONE: (616) 258-4338
FAX: (616) 258-2696

FLOW CONTROL VALVES

PNEUMATICS



GENERAL INFORMATION
Comes with locking adjustment nut, brass body, 2000 psi max.



Economy Model

FLOW CONTROL		ORDER INFORMATION	
PORT SIZE	REFERENCE	STOCK NUMBER	PRICE
1/8"	SPF 200B	SH01990	13.90
1/4"	SPF 400B	SH02000	17.50
3/8"	SPF 600B	SH02010	22.60
1/2"	SPF 800B	SH02020	32.10

GENERAL INFORMATION

Adjustment with safety lock nut screw, brass body, 250 psi max, used for precise control cylinder and motor speed.



Precision Micrometer

FLOW CONTROL			ORDER INFORMATION		
PORT SIZE	SCFM (FLOW)		REFERENCE	STOCK NUMBER	PRICE
	ADJ.	FREE FLOW			
1/4"	35	77	00337 1001	SH00301	26.40
3/8"	64	146	00337 1002	SH00302	35.10
1/2"	133	164	00337 1003	SH00303	47.50

GENERAL INFORMATION

Comes with large Hex locking nut to maintain speed setting, brass body, -40°F to 180°F, 400 psi max air, 800 psi max hydraulic.



Premium Hi-Flow Series

FLOW CONTROL			ORDER INFORMATION	
PORT SIZE	SCFM (FLOW)	REFERENCE	STOCK NUMBER	PRICE
1/8"	60	03250 0119	SH01085	25.70
1/4"	120	03250 0219	SH01100	28.60
3/8"	205	03250 0319	SH01115	37.20
1/2"	346	03250 0419	SH01130	52.10
3/4"	615	03250 0519	SH01145	77.00



STOCK NO. AL08000
1/8", high flow, sensitive metering, brass

STOCK NO. AL08005
3/8", high flow, sensitive metering, brass

FLOW CONTROL				ORDER INFORMATION	
PORT SIZE	Cv CHECK	CHECK NEEDLE	REFERENCE	STOCK NUMBER	PRICE
1/8"	.60	.30	JF1	AL08000	20.56
3/8"	2.85	1.08	JF3	AL08005	32.80

GRAND RAPIDS

TOLL FREE 1-800-968-0188
PHONE: (616) 949-8844
FAX: (616) 949-6598

KALKASKA

TOLL FREE 1-800-355-4338
PHONE: (616) 258-4338
FAX: (616) 258-2696

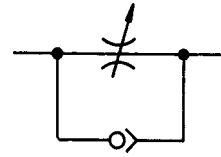
RIGHT ANGLE FLOW CONTROL

PNEUMATICS

General Duty



Body: Brass
Plunger: Brass and Acetal
Seals: Buna N
Temperature Range: 0° to 140°F (-18°C to 60°C)
Pressure Rating: 125 PSIG (863 kPa) max.



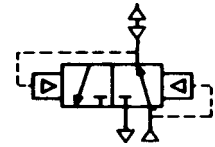
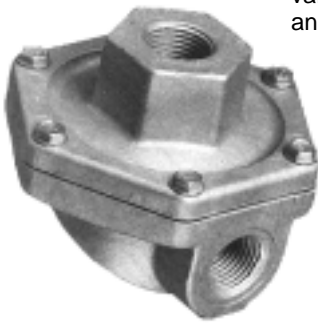
RIGHT ANGLE FLOW CONTROL		ORDER INFORMATION	
PIPE THREAD	REFERENCE	STOCK NUMBER	PRICE
1/8"	032510125	SH01150	16.20
1/4"	032510250	SH01151	17.50
3/8"	032510375	SH01152	22.30
1/2"	032510500	SH01153	32.20

QUICK EXHAUST VALVES

PNEUMATICS

GENERAL INFORMATION

Quick exhaust valves provide rapid exhaust of control air when placed between control valve and actuator. They can also be used as shuttle valves. Diaphragm materials are available in urethane, Nitrile, Viton and Teflon to meet a wide variety of operating conditions.



QUICK EXHAUST VALVE			ORDER INFORMATION	
PORT SIZE	SCFM (FLOW)	REFERENCE	STOCK NUMBER	PRICE
1/4"	150	0R25NB	SH01210	19.50
3/8"	240	0R37B	SH01195	19.70
1/2"	450	0R50B	SH01700	36.30
3/4"	550	0R75B	SH01750	36.30

EXHAUST MUFFLERS

PNEUMATICS

Silencer

Aluminum bodied high flow muffler
 Exceeds OSHA requirements



HIGH FLOW MUFFLER		ORDER INFORMATION	
PIPE THREAD	REFERENCE	STOCK NUMBER	PRICE
1/8	HFMA-18	8L00300	10.10
1/4	HFMA-28	8L00310	10.10
3/8	HFMA-38	8L00320	15.10
1/2	HFMA-48	8L00330	15.00
3/4	HFMA-68	8L00340	23.20
1	HFMA-88	8L00350	23.20

GENERAL DESCRIPTION

The Silencer is an entirely new air muffler designed to give you superior performance in noise control with a minimum effect on air efficiency.

APPLICATION

Fits directly into the exhaust port of more than 90% of present commercial valves.

GRAND RAPIDS

TOLL FREE 1-800-968-0188
 PHONE: (616) 949-8844
 FAX: (616) 949-6598

KALKASKA

TOLL FREE 1-800-355-4338
 PHONE: (616) 258-4338
 FAX: (616) 258-2696