

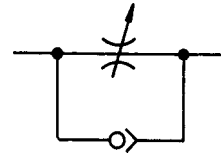
RIGHT ANGLE FLOW CONTROL

PNEUMATICS

General Duty



Body: Brass
Plunger: Brass and Acetal
Seals: Buna N
Temperature Range: 0° to 140°F (-18°C to 60°C)
Pressure Rating: 125 PSIG (863 kPa) max.



SPECIFICATION AND DESCRIPTION

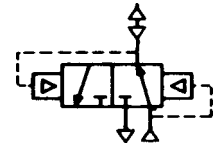
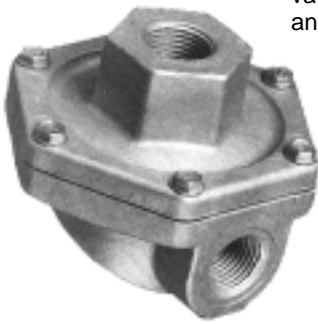
RIGHT ANGLE FLOW CONTROL		ORDER INFORMATION	
PIPE THREAD	REFERENCE	STOCK NUMBER	PRICE
1/8"	032510125	SH01150	16.20
1/4"	032510250	SH01151	17.50
3/8"	032510375	SH01152	22.30
1/2"	032510500	SH01153	32.20

QUICK EXHAUST VALVES

PNEUMATICS

GENERAL INFORMATION

Quick exhaust valves provide rapid exhaust of control air when placed between control valve and actuator. They can also be used as shuttle valves. Diaphragm materials are available in urethane, Nitrile, Viton and Teflon to meet a wide variety of operating conditions.



QUICK EXHAUST VALVE			ORDER INFORMATION	
PORT SIZE	SCFM (FLOW)	REFERENCE	STOCK NUMBER	PRICE
1/4"	150	0R25NB	SH01210	19.50
3/8"	240	0R37B	SH01195	19.70
1/2"	450	0R50B	SH01700	36.30
3/4"	550	0R75B	SH01750	36.30

EXHAUST MUFFLERS

PNEUMATICS

Silencer

Aluminum bodied high flow muffler
 Exceeds OSHA requirements



HIGH FLOW MUFFLER		ORDER INFORMATION	
PIPE THREAD	REFERENCE	STOCK NUMBER	PRICE
1/8	HFMA-18	8L00300	10.10
1/4	HFMA-28	8L00310	10.10
3/8	HFMA-38	8L00320	15.10
1/2	HFMA-48	8L00330	15.00
3/4	HFMA-68	8L00340	23.20
1	HFMA-88	8L00350	23.20

GENERAL DESCRIPTION

The Silencer is an entirely new air muffler designed to give you superior performance in noise control with a minimum effect on air efficiency.

APPLICATION

Fits directly into the exhaust port of more than 90% of present commercial valves.

GRAND RAPIDS

TOLL FREE 1-800-968-0188
 PHONE: (616) 949-8844
 FAX: (616) 949-6598

KALKASKA

TOLL FREE 1-800-355-4338
 PHONE: (616) 258-4338
 FAX: (616) 258-2696

Sintered Bronze Muffler - Filters

Meet OSHA requirements for noise reduction



SINTERED BRONZE MUFFLER/FILTER				ORDER INFORMATION	
PIPE THREAD	OVERALL LENGTH	HEX	REFERENCE	STOCK NUMBER	PRICE
1/8	59/64	7/16	BM-18	8L00010	5.60
1/4	1 - 19/64	9/16	BM-28	8L00020	5.80
3/8	1 - 37/64	11/16	BM-38	8L00030	8.00
1/2	1 - 27/32	7/8	BM-48	8L00040	10.50
3/4	2 - 3/16	1 - 3/16	BM-68	8L00050	13.80
1	2 - 57/64	1 - 3/8	BM-88	8L00060	19.70

GENERAL INFORMATION

Muffler-filters reduce air exhaust noises with minimum flow restriction. They protect valves, impact wrenches, screw drivers and other air tools by preventing dirt and other matter from entering the system.

APPLICATION

Muffler-filters are used to control noise when installed in valve exhaust ports.

Muffler Speed Controls



SPEED CONTROL				ORDER INFORMATION		
PIPE THREAD	LENGTH (OPEN)	HEX	MAX. ADJ. FLOW SCFM	REFERENCE	STOCK NUMBER	PRICE
1/8	1 - 1/2	1/2	30	SCM-18	8L00100	9.40
1/4	1 - 11/16	9/16	50	SCM-28	8L00110	10.80
3/8	1 - 11/16	11/16	70	SCM-38	8L00120	13.00
1/2	2	7/8	100	SCM-48	8L00130	14.90

GENERAL INFORMATION

Muffler-Speed Controls meter exhaust and control cylinder piston speeds throughout a wide range. Brass and bronze construction.

APPLICATION

Installed in valve exhaust ports, they control cylinder piston speed and exhaust noise level.

Breather Vents



BREATHER VENT				ORDER INFORMATION	
PIPE THREAD	OVERALL LENGTH	HEX	REFERENCE	STOCK NUMBER	PRICE
1/8	1/2	7/16	BV-18	8L00200	3.60
1/4	11/16	9/16	BV-28	8L00210	4.10
3/8	53/64	11/16	BV-38	8L00220	4.90
1/2	15/16	7/8	BV-48	8L00230	6.10

GENERAL DESCRIPTION

Non-corrosive. NOTE. These are Breather Vents, not exhaust mufflers.

APPLICATION

These muffler-filters are useful where space is a problem and/or to prevent contamination for vacuum relief or pressure equalization in gear boxes, oil tanks, reservoirs, etc.

GRAND RAPIDS

TOLL FREE 1-800-968-0188
PHONE: (616) 949-8844
FAX: (616) 949-6598

KALKASKA

TOLL FREE 1-800-355-4338
PHONE: (616) 258-4338
FAX: (616) 258-2696