

SOLENOID VALVES - HIGH FLOW

HYDRAULICS



GENERAL INFORMATION

All valves come standard with:

- Indicator lights for easy trouble shooting.
- Convenient terminal box for electrical wiring.
- High pressure, high flow rating yields low pressure drop resulting in high performance.

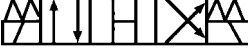


SIZE D03

STOCK NO. 3L00020



STOCK NO. 3L00030



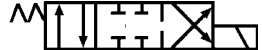
STOCK NO. 3L00040



STOCK NO. 3L00050

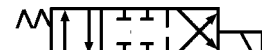


STOCK NO. 3L00010



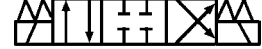
SIZE D05

STOCK NO. 3L00060

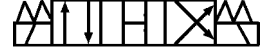


SIZE D05

STOCK NO. 3L00070



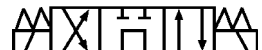
STOCK NO. 3L00080



STOCK NO. 3L00090



STOCK NO. 3L00100



| SOLENOID VALVE | | | | | | | ORDER INFORMATION | |
|--------------------------|------|-----------|-----------|-------------|------------|----------------|-------------------|--------|
| VICKERS CROSS REFERENCE | SIZE | GPM | PSI (MAX) | NO. OF SOL. | ELECTRICAL | REFERENCE | STOCK NUMBER | PRICE |
| DG4V3S-2A-MFW-B5-60 | D03 | 16.8 | 4500 | 1 | 120V/60Hz | DVSS-03-A3X-15 | 3L00010 | 170.00 |
| DG4V3S-2C-MFW-B5-60 | D03 | 16.8 | 4500 | 2 | 120V/60Hz | DVDS-03-C5-15 | 3L00020 | 213.71 |
| DG4V3S-0C-MFW-B5-60 | D03 | 16.8 | 4500 | 2 | 120V/60Hz | DVDS-03-C4-15 | 3L00030 | 213.71 |
| DG4V3S-6C-MFW-B5-60 | D03 | 16.8 | 4500 | 2 | 120V/60Hz | DVDS-03-C6-15 | 3L00040 | 213.71 |
| DG4V3S-8C-VMFW-B5-61 | D03 | 16.8 | 4500 | 2 | 120V/60Hz | DVDS-03-C7Y-15 | 3L00050 | 213.71 |
| HIGH FLOW SOLENOID VALVE | | | | | | | ORDER INFORMATION | |
| VICKERS CROSS REFERENCE | SIZE | GPM | PSI (MAX) | NO. OF SOL. | ELECTRICAL | REFERENCE | STOCK NUMBER | PRICE |
| DG4S4-LW-012A-B60 | D05H | 18.5-34.3 | 4570 | 1 | 120V/60Hz | DVSS-05-A3X-15 | 3L00060 | 288.60 |
| DG4S4-LW-012C-B60 | D05H | 18.5-34.3 | 4570 | 2 | 120V/60Hz | DVDS-05-C5-15 | 3L00070 | 382.69 |
| DG4S4-LW-010C-B60 | D05H | 18.5-34.3 | 4570 | 2 | 120V/60Hz | DVDS-05-C4-15 | 3L00080 | 382.69 |
| DG4S4-LW-016C-B60 | D05H | 18.5-34.3 | 4570 | 2 | 120V/60Hz | DVDS-05-C6-15 | 3L00090 | 382.69 |
| DG4S4-LW-018C-B60 | D05H | 18.5-34.3 | 4570 | 2 | 120V/60Hz | DVDS-05-C7Y-15 | 3L00100 | 382.69 |
| D03 REPLACEMENT SOLENOID | | | | | 120V/60Hz | SOL-03-15 | 3L00600 | 42.86 |
| D05 REPLACEMENT SOLENOID | | | | | 120V/60Hz | SOL-05-15 | 3L00610 | 110.00 |

BOLT KITS FOR D03 & D05 VALVES LISTED ABOVE

HYDRAULICS

- For Use With Infi-Drive Power Products D03/D05 Directional Valves Only
- D03/Bolt Torque 63-80 lb/in
- D05/Bolt Torque 100-130 lb/in



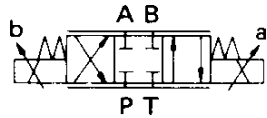
| BOLT KIT | | | ORDER INFORMATION | |
|----------|-------------------|----------------------------------|-------------------|-------|
| SIZE | NUMBER OF MODULES | REFERENCE | STOCK NUMBER | PRICE |
| D03 | 0 | BOLT KIT INCLUDED WITH D03 VALVE | | |
| D03 | 1 | MBK-02-1-2 | 3L04000 | 22.50 |
| D03 | 2 | MBK-02-2-2 | 3L00410 | 21.37 |
| D03 | 3 | MBK-02-3-2 | 3L00420 | 42.97 |
| D03 | 4 | MBK-02-4-2 | 3L00430 | 47.54 |
| D05 | 0 | BOLT KIT INCLUDED WITH D05 VALVE | | |
| D05 | 1 | MBK-03-1-2 | 3L00400 | 22.50 |
| D05 | 2 | MBK-03-2-2 | 3L00450 | 25.00 |
| D05 | 3 | MBK-03-3-2 | 3L00460 | 25.00 |
| D05 | 4 | MBK-03-4-2 | 3L00470 | 25.00 |

GRAND RAPIDS

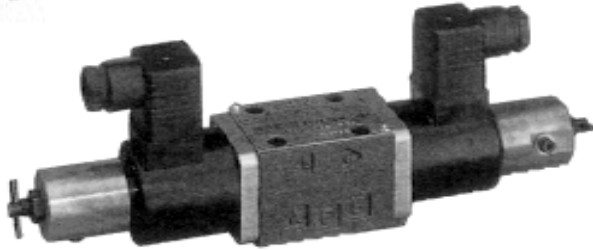
TOLL FREE 1-800-968-0188
PHONE: (616) 949-8844
FAX: (616) 949-6598

KALKASKA

TOLL FREE 1-800-355-4338
PHONE: (616) 258-4338
FAX: (616) 258-2696



ELECTRO-HYDRAULIC PROPORTIONAL DIRECTIONAL & FLOW CONTROL VALVE PACKAGE



This is an electro-hydraulic proportional control valve which is composed of DC proportional solenoids in addition to the conventional 4-way solenoid valve to provide both directional control and flow control functions. The available sizes are 01 size of the direct acting system and the 03, 06, and 10 sizes of the pilot system.

Directional control is performed by applying an input current on one of the two proportional solenoids. And the flow volume is controlled by changing the magnitude of the input current. Remote control and shockless acceleration and deceleration control are possible and the hydraulic circuit can be simplified.

Includes

- D03 Dual Side Ported 3/8 NPT Aluminum Subplate with Plugs and Screws
- D03 4 Way - 3 Position Double DC Proportional Solenoid, 6.6 GPM, 3000 PSI
- Signal Amplifier
 - Open Loop Amplifier
 - Controller / Amplifier
- Power Supply
 - 24 VDC 1.25 AMP

| PROPORTIONAL VALVE PACKAGE | | | | | ORDER INFORMATION | |
|----------------------------|-----|----------------|----------------------|---------------------|-------------------|---------|
| SIZE | GPM | # OF SOLENOIDS | CONTROL | REFERENCE | STOCK NUMBER | PRICE |
| D03 | 6.6 | DOUBLE/DC | OPEN LOOP AMPLIFIER | ESD-G01-C5-20-E-EDA | 3L00160 | 1605.99 |
| D03 | 6.6 | DOUBLE/DC | CONTROLLER AMPLIFIER | ESD-G01-C5-20-E-EDC | 3L00165 | 1874.50 |

INDIVIDUAL COMPONENTS

| D03 - STANDARD DUAL SIDE PORTED SUBPLATE | | | ORDER INFORMATION | |
|--|------------|--------------|-------------------|--|
| SIZE | REFERENCE | STOCK NUMBER | PRICE | |
| 3/8" NPT | AD03SPSB6P | GP03100 | 47.00 | |

| PROPORTIONAL VALVE | | | | | | ORDER INFORMATION | | |
|--------------------|-----|---------------|----------------|----------------|------------|-------------------|--------------|--------|
| SIZE | GPM | P.S.I. (MAX.) | # OF SOLENOIDS | # OF POSITIONS | ELECTRICAL | REFERENCE | STOCK NUMBER | PRICE |
| D03 | 6.6 | 3000 | DOUBLE | THREE | DC | ESD-G01-C5-20-E11 | NI50000 | 872.14 |

| AMPLIFIER | | | ORDER INFORMATION | |
|------------|------------------------|-------------------|-------------------|--------|
| ELECTRICAL | TYPE | REFERENCE | STOCK NUMBER | PRICE |
| DC 24V | OPEN LOOP AMPLIFIER | EDA-PD1-NWZ-D2-11 | NI75100 | 504.00 |
| DC 24V | CONTROLLER / AMPLIFIER | EDC-PC6-AWZ-D2-20 | NI75600 | 801.31 |

| DC POWER SUPPLY | | | | ORDER INFORMATION | |
|------------------------|----------------|------|-----------------|-------------------|--------|
| INPUT VOLTAGE | OUTPUT VOLTAGE | AMP | REFERENCE | STOCK NUMBER | PRICE |
| 100/120/220/230/240 AC | 24V DC | 1.25 | DC POWER SUPPLY | 3L00170 | 153.77 |

GRAND RAPIDS

TOLL FREE 1-800-968-0188
PHONE: (616) 949-8844
FAX: (616) 949-6598

KALKASKA

TOLL FREE 1-800-355-4338
PHONE: (616) 258-4338
FAX: (616) 258-2696