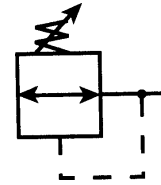




PREP-AIR II



FEATURES

- Unbalanced poppet standard.
- Solid control piston with lip seal for extended life.
- Non-rising adjusting knob.
- Compact, 2.9 inch (74 mm) high by 1.65 inch (42 mm) wide.
- Easily serviced.



MINIATURE AIR LINE REGULATOR			ORDER INFORMATION	
PORT SIZE	SCFM (FLOW)	REFERENCE	STOCK NUMBER	PRICE
1/8"	13	14R013FC	SE20990	20.50
1/4"	15	14R113FC	SE21000	20.50

FEATURES

- Secondary aspiration plus balanced poppet provides quick response and accurate pressure regulation.
- Rolling diaphragm for extended life.
- Removable non-rising knob for panel mounting and tamper resistance.
- Easily serviced.
- Reverse Flow.
- High Flow:
 - 1/8" - 30 SCFM §
 - 1/4" - 30 SCFM §
 - 3/8" - 40 SCFM §



ECONOMY AIR LINE REGULATOR			ORDER INFORMATION	
PORT SIZE	SCFM (FLOW)	REFERENCE	STOCK NUMBER	PRICE
1/4"	30	05R113AD	SE40105	28.80
3/8"	40	05R213AD	SE40110	28.80

FEATURES

- Secondary aspiration plus balanced poppet provides quick response and accurate pressure regulation.
- Rolling diaphragm for extended life.
- Two high flow 1/4" gauge ports can be used as additional outlets.
- Easily serviced.
- Removable knob for panel mounting and tamper resistance.



COMPACT AIR LINE REGULATOR				ORDER INFORMATION	
PORT SIZE	SCFM (FLOW)	PSIG RANGE	REFERENCE	STOCK NUMBER	PRICE
1/4"	50	0-250	06R115AC	SE21020	43.90
1/4"	53	0-125	06R113AC	SE21030	42.10
3/8"	60	0-125	06R213AC	SE21040	42.10
1/2"	75	0-125	06R313AC	SE21035	42.10

FEATURES

- Secondary aspiration plus balanced poppet provides quick response and accurate pressure regulation.
- Rolling diaphragm for extended life.
- Two high flow 1/4" gauge ports can be used as additional outlets.
- Easily serviced.
- Removable knob for panel mounting and tamper resistance.



STANDARD AIR LINE REGULATOR				ORDER INFORMATION	
PORT SIZE	SCFM (FLOW)	PSIG RANGE	REFERENCE	STOCK NUMBER	PRICE
3/8"	70	0-125	07R213AC	SE21060	66.00
1/2"	90	0-125	07R313AC	SE21070	66.00
3/4"	90	0-125	07R413AC	SE21080	66.00

**OPTIONAL: FOR ACCESSORIES, SEE PAGE 6*

GRAND RAPIDS

TOLL FREE 1-800-968-0188
PHONE: (616) 949-8844
FAX: (616) 949-6598

KALKASKA

TOLL FREE 1-800-355-4338
PHONE: (616) 258-4338
FAX: (616) 258-2696