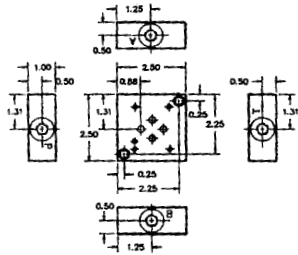




**DAMAN**  
PRODUCTS COMPANY

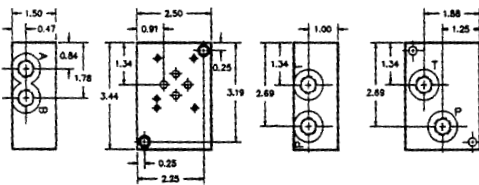
### D03- Standard single side ported subplates



- Vickers/ Denison/ Others
- Pressure rating: 3000 psi (5000 psi also available. Consult GLH salesperson. )
- Two 0.25- 20 x 0.88 long socket head cap screws are furnished.

D03-STANDARD SINGLE SIDE PORTED SUBPLATE		ORDER INFORMATION	
SIZE	REFERENCE	STOCK NUMBER	PRICE
3/8" NPT	AD03SPS6P	GP03000	31.00

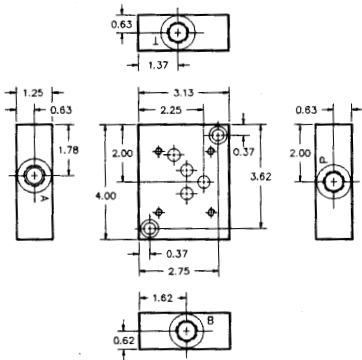
### D03- Standard dual side ported subplates



- Two 0.25- 20 x 1.50 long socket head cap screws are furnished
- Pressure and tank connections may be brought in either the side or back. Two plugs are furnished to block unused ports.
- The back- located pressure and tank ports are machined to allow plugs to be installed flush.
- Pressure rating: 3000 psi.

D03 - STANDARD DUAL SIDE PORTED SUBPLATE		ORDER INFORMATION	
SIZE	REFERENCE	STOCK NUMBER	PRICE
3/8" NPT	AD03SPSB6P	GP03100	47.00

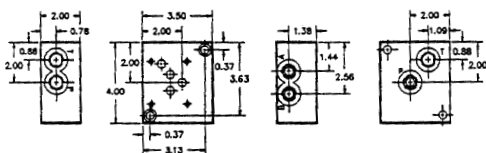
### D05- Standard single side ported subplates



- Pressure rating: 3000 psi.
- Two 0.38 - 16 X 1.25 long socket head cap screws are furnished.

D05-STANDARD SINGLE SIDE PORTED SUBPLATE		ORDER INFORMATION	
SIZE	REFERENCE	STOCK NUMBER	PRICE
1/2" NPT	AD05SPS8P	GP04000	48.00

### D05- Standard dual side ported subplates



- Two 0.38- 16 x 1.50 long socket head cap screws are furnished
- Pressure and tank connections may be brought in either the side or back. Two plugs are furnished to block unused ports.
- The back- located pressure and tank ports are machined to allow plugs to be installed flush.
- Pressure rating: 3000 psi.

D05-STANDARD DUAL SIDE PORTED SUBPLATE		ORDER INFORMATION	
SIZE	REFERENCE	STOCK NUMBER	PRICE
1/2" NPT	AD05SPSB8P	GP04100	59.00

**GRAND RAPIDS**

TOLL FREE 1-800-968-0188  
PHONE: (616) 949-8844  
FAX: (616) 949-6598

**KALKASKA**

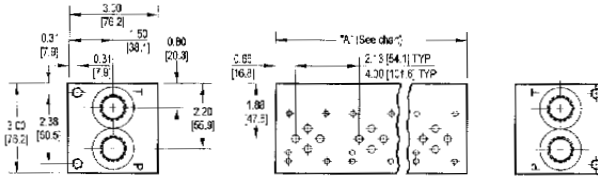
TOLL FREE 1-800-355-4338  
PHONE: (616) 258-4338  
FAX: (616) 258-2696



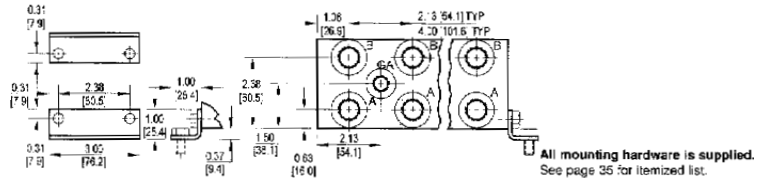
**DAMAN**  
PRODUCTS COMPANY

**\*2-4 Stations In Stock — Up to 16 Stations Available**

### D03 - MULTIPLE VALVE MANIFOLDS



- \* P&T = 0.50 - 14 NPTF OR 0.88 - 14 SAE "O" RING PORTS.
- \* A&B = 0.38 - 18 NPTF OR 0.75 - 16 SAE "O" RING PORTS.
- \* GA PORT = 0.25 - 18 NPTF OR 0.44 - 20 SAE "O" RING PORT.
- \* PRESSURE RATING: 3000 PSI



All mounting hardware is supplied. See page 35 for itemized list.

- \* ALL MANIFOLDS INCLUDE MOUNTING BOLTS AND A STRAIGHT THREAD GAUGE PORT PLUG.
- \* NOTE: AVAILABLE WITH RELIEF VALVE CAVITIES, SPECIAL 4" SPACING, SPECIAL PORTING, SPECIAL THREADS, ETC. OTHER CONFIGURATIONS ARE AVAILABLE TO 16 STATIONS AND 5000 PSI. CONSULT A GLH SALESPERSON FOR COMPLETE SPECIFICATIONS.

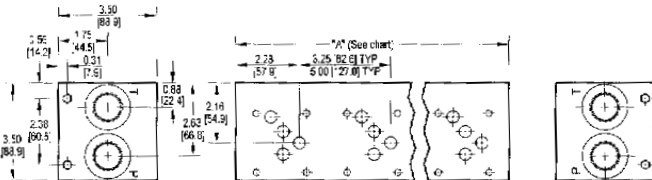
D03 MULTIPLE VALVE MANIFOLD			ORDER INFORMATION	
NO. OF STATIONS	DIM. "A" LENGTH	REFERENCE	STOCK NUMBER	PRICE
2	4.25	A-D03-P-02-2P	GP02000	68.00
3	6.38	A-D03-P-03-2P	GP02100	89.00
4	8.50	A-D03-P-04-2P	GP02200	112.00



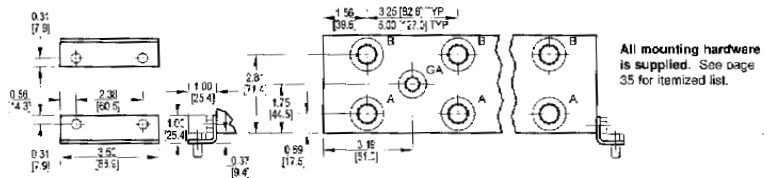
**DAMAN**  
PRODUCTS COMPANY

**\*2-4 Stations In Stock — Up to 21 Stations Available**

### D05 - MULTIPLE VALVE MANIFOLDS



- \* P&T = 0.75 - 14 NPTF OR 1.06 - 12 SAE "O" RING PORTS.
- \* A&B = 0.50 - 14 NPTF OR 0.75 - 16 SAE "O" RING PORTS.
- \* GA PORT = 0.25 - 18 NPTF OR 0.44 - 2 SAE "O" RING PORT.
- \* PRESSURE RATING: 3000 PSI



All mounting hardware is supplied. See page 35 for itemized list.

- \* NOTE: AVAILABLE WITH RELIEF VALVE CAVITIES, SPECIAL 4" SPACING, SPECIAL PORTING, SPECIAL THREADS, ETC. OTHER CONFIGURATIONS ARE AVAILABLE TO 21 STATIONS AND 5000 PSI. CONSULT A GLH SALESPERSON FOR COMPLETE SPECIFICATIONS.

D05 MULTIPLE VALVE MANIFOLD			ORDER INFORMATION	
NO. OF STATIONS	DIM. "A" LENGTH	REFERENCE	STOCK NUMBER	PRICE
2	6.5	A-D05-P-02-3P	GP02500	106.00
3	9.75	A-D05-P-03-3P	GP02600	144.00

- \* NOTE: ALL MOUNTING BOLTS AND BRACKETS ARE INCLUDED WITH EACH MANIFOLD

**GRAND RAPIDS**

TOLL FREE 1-800-968-0188  
PHONE: (616) 949-8844  
FAX: (616) 949-6598

**KALKASKA**

TOLL FREE 1-800-355-4338  
PHONE: (616) 258-4338  
FAX: (616) 258-2696