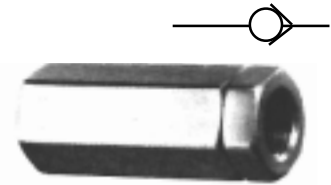
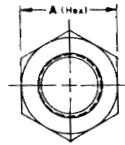
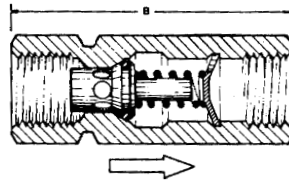


# INLINE CHECK VALVES

HYDRAULICS



## GENERAL INFORMATION & APPLICATION

Soft seat (virtual zero leak) and guided piston design inline check valves are excellent for a wide variety of applications where free flow in one direction and blocked flow in reverse direction is required. The streamlined poppet with full ports and soft seat offers minimum restriction to flow and positive shutoff.

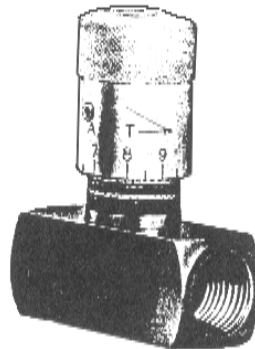
INLINE CHECK VALVE							ORDER INFORMATION	
PORTS	MAX PSI	SPRING	GPM	DIMENSIONS		REFERENCE	STOCK NUMBER	PRICE
				A	B			
1/4"	5000	5 PSI	6	3/4"	1.97"	CPIFF-2P-5	SU01100	14.08
1/4"	5000	65 PSI	6	3/4"	1.97"	CPIFF-2P-65	SU01105	14.08
3/8"	5000	5 PSI	12	1"	2.6"	CPIFF-3P-5	SU01110	16.70
3/8"	5000	65 PSI	12	1"	2.6"	CPIFF-3P-65	SU01115	16.70
1/2"	5000	5 PSI	19	1-1/4"	3.25"	CPIFF-4P-5	SU01120	19.76
1/2"	5000	25 PSI	19	1-1/4"	3.25"	CPIFF-4P-25	SU01122	19.76
1/2"	5000	65 PSI	19	1-1/4"	3.25"	CPIFF-4P-65	SU01126	19.76
3/4"	5000	5 PSI	35	1-3/8"	4.33"	CPIFF-6P-5	SU01130	26.80
3/4"	5000	65 PSI	35	1-3/8"	4.33"	CPIFF-6P-65	SU01136	26.80
1"	5000	5 PSI	55	1-3/4"	4.78"	CPIFF-8P-5	SU01139	41.69
1"	5000	65 PSI	55	1-3/4"	4.78"	CPIFF-8P-65	SU01145	41.69
1-1/4"	2500	5 PSI	95	2-1/8"	5.69"	3C20F-F5	SU01150	77.11
1-1/4"	2500	65 PSI	95	2-1/8"	5.69"	3C20F-F65	SU01155	77.11
1-1/2"	2500	5 PSI	130	2-3/4"	6.5"	3C24F-F5	SU01160	100.51
2"	2500	5 PSI	200	3-1/4"	7.28"	3C32F-F5	SU01170	354.98

# FLOW CONTROL VALVES

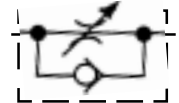
HYDRAULICS

**DELTROL**  
*fluid products*

**CARBON STEEL  
CONSTRUCTION**



**STOCK NO. FP10520**  
1/4" PORTS  
**STOCK NO. FP10522**  
3/8" PORTS  
**STOCK NO. FP10524**  
1/2" PORTS



**STOCK NO. FP10526**  
3/4" PORTS  
**STOCK NO. FP10528**  
1" PORTS

## GENERAL INFORMATION & APPLICATION

Flow Control Valves provide controlled flow in direction of arrow and free flow away from arrow. Adjustments can be made under pressure; an exclusive locknut prevents unwanted changes in adjustment.

FLOW CONTROL VALVE						ORDER INFORMATION		
PORT SIZE	A (OPEN)	A (CLOSED)	B (SQUARE)	C	MAX OPERATING (PSI) PRESSURE	REFERENCE	STOCK NUMBER	PRICE
1/4"	1-31/32	1-3/4	3/4	2-13/32	5000	EF-20S	FP10520	43.90
3/8"	2-1/4	2	1	2-7/8	5000	EF-25S	FP10522	54.40
1/2"	2-13/16	2-15/32	1-1/8	3-7/16	5000	EF-30S	FP10524	75.20
3/4"	2-3/16	2-3/16	1-3/8	3-3/4	5000	EF-35S	FP10526	110.20
1"	5-1/16	4-11/16	1	4-1/2	5000	EF-40S	FP10528	281.00

**GRAND RAPIDS**

TOLL FREE 1-800-968-0188  
PHONE: (616) 949-8844  
FAX: (616) 949-6598

**KALKASKA**

TOLL FREE 1-800-355-4338  
PHONE: (616) 258-4338  
FAX: (616) 258-2696