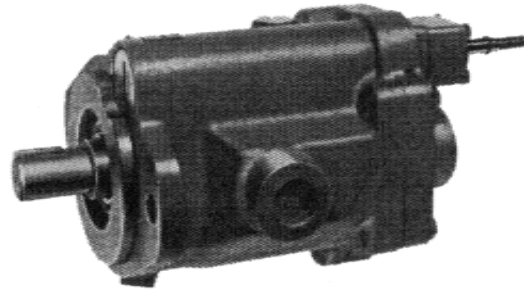
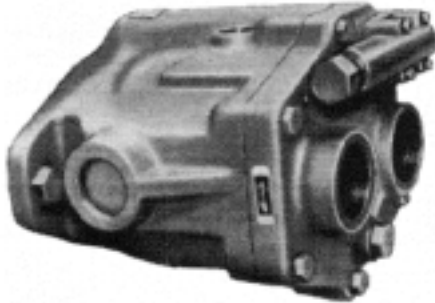
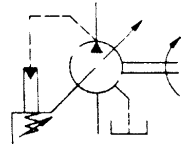


PISTON PUMPS-VARIABLE VOLUME

HYDRAULICS



•PRESSURE COMPENSATED•



PARTS AND MOUNTING INTERCHANGEABLE WITH VICKERS

PISTON PUMP								ORDER INFORMATION	
GPM @ 1800 RPM	PRESSURE RANGE (PSI)	MOUNT TYPE	SHAFT SIZE	KEY SIZE	WEIGHT	VICKERS REFERENCE	REFERENCE	STOCK NUMBER	PRICE
5	3000	SAE A 2 BOLT	3/4"	3/16"	16 lbs.	PVB5-RSY-21-C11	IFPPBV5-R-C70	1L00500	1,364.00
6	2000	SAE A 2 BOLT	3/4"	3/16"	16 lbs.	PVB6-RSY-21-C11	IFPPBV6-R-C70	1L00510	1,255.00
10	3000	SAE B 2 BOLT	7/8"	3/16"	30 lbs.	PVB10-RSY-40-C11	IFPPBV10-R-C70	1L00520	1,636.00
15	2000	SAE B 2 BOLT	7/8"	3/16"	30 lbs.	PVB15-RSY-40-C11	IFPPBV15-R-C70	1L00530	1,745.00
20	3000	SAE C 2 BOLT	1 1/4"	5/16"	57 lbs.	PVB20-RS-20-C11	IFPPBV20-R-C70	1L00540	2,285.00
29	2000	SAE C 2 BOLT	1 1/4"	5/16"	57 lbs.	PVB29-RS-20-C11	IFPPBV29-R-C70	1L00550	2,588.00
45	3000	SAE D 2 BOLT	1 3/4"	7/16"	210 lbs.	PVB45-RSF-20-C11	IFPPBV45-R-C70	1L00560	5,652.00

- **Quiet** - Noise Levels Are Below Industry Standards Per ISO 4412.
- **Mounting** - Mounting Type, Shaft And Ports To SAE Standards.
- **Value** - PVB Series Combines High Volumetric Performance With Low Overall Cost For Industrial Applications.

- Pressure Compensator Range 250 - 3000 PSI.
- Horizontal mounting is recommended to maintain fluid levels.
- Shaft rotation is not reversible and must be specified when ordering.

OPTIONS:

- Rotation: Right Hand (CW) Standard
Left Hand (CCW) Option
- Ports: Rear Ports
Side Ports
- Mounting: Foot Bracket Option
- Shaft: Standard
Short
Spline

PUMP INFORMATION				
STOCK NUMBER	DISPLACEMENT IN. ³ /REV.	GPM		MAX PSI
		@1200	@1800	
1L00500	.643	3.34	5	3,000
1L00510	.843	4.34	6	2,000
1L00520	1.29	6.67	10	3,000
1L00530	2.01	10.47	15	2,000
1L00540	2.61	13.34	20	3,000
1L00550	3.76	19.34	29	2,000
1L00560	5.76	30	45	3,000

•OTHER OPTIONS AVAILABLE, CONSULT YOUR CUSTOMER SERVICE REPRESENTATIVE.

GRAND RAPIDS
TOLL FREE 1-800-968-0188
PHONE: (616) 949-8844
FAX: (616) 949-6598

KALKASKA
TOLL FREE 1-800-355-4338
PHONE: (616) 258-4338
FAX: (616) 258-2696