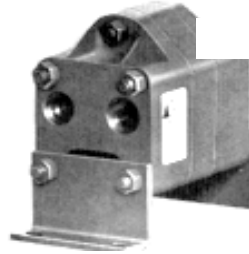


FLOW DIVIDERS

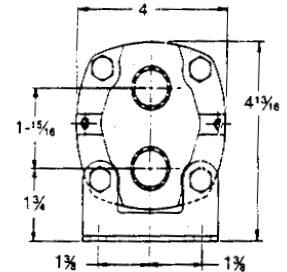
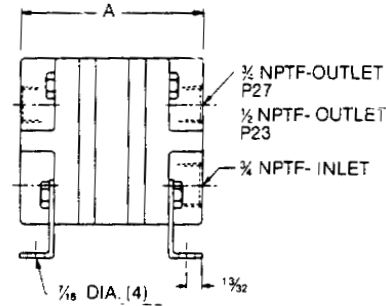
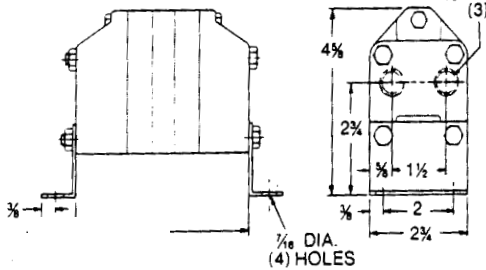
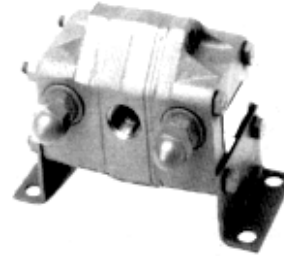
HYDRAULICS



STOCK NO. DF01000



STOCK NO. DF01300
STOCK NO. DF01400



GENERAL INFORMATION

Equal-flow two-section units divide flow from a common pump source into separate flows of equal proportion. Both gear sets all assembled to a common shaft.

FLOW DIVIDER									ORDER INFORMATION	
NO. OF SECT.	TOTAL MAX. INLET (GPM)	O-PSI DISP. PER SECT. (GAL./REV.)	SLIP† (GPM/100 PSI)	MAX. PRESS. INTERMITTENT (PSI)	MAX. PRESS. CONTINUOUS (PSI)	BOLT TORQUE (FT.-LB.)	DIM. "A"	REFERENCE	STOCK NUMBER	PRICE
2	9.5	.00137	.038	2000	1500	13-17	4.72	PM6	DF01000	186.00
2	21.0	.00304	.068	2000	1500	24-31	5.32	P23	DF01300	283.00
2	44.0	.00633	.113	2000	1500	24-31	6.86	P27	DF01400	324.00

CUSTOM AIR HOSE ASSEMBLIES

PNEUMATICS

CUSTOM AIR HOSE ASSEMBLIES

ASSEMBLE • TEST • CERTIFY

We will custom manufacture Air Hose Assemblies to your specifications for same day shipment (if ordered by 12 noon) utilizing any Air Hose and Fittings contained in this catalog.

GRAND RAPIDS

TOLL FREE 1-800-968-0188
PHONE: (616) 949-8844
FAX: (616) 949-6598

KALKASKA

TOLL FREE 1-800-355-4338
PHONE: (616) 258-4338
FAX: (616) 258-2696