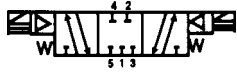




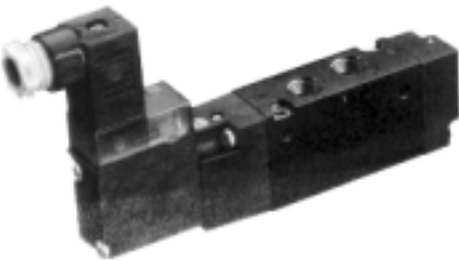
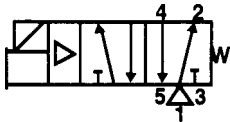
SPRINT SERIES



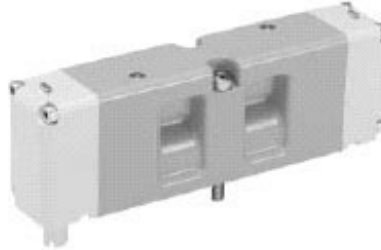
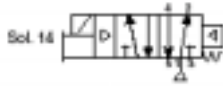
B 3 SERIES



STOCK NO. SD03302
1/8", 4-WAY, 5-PORT, 3-POSITION,
DOUBLE SOLENOID, SPRING CENTERED,
WITH OR WITHOUT DIN CONNECTORS

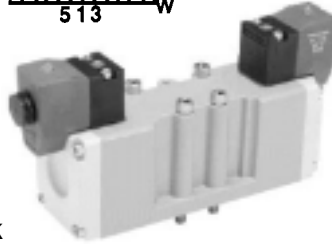
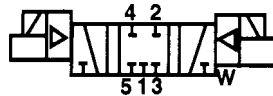


STOCK NO. SD03300
1/8", 4-WAY, 5-PORT, 2-POSITION,
SINGLE SOLENOID, AIR SPRING RETURN,
DIN CONNECTORS



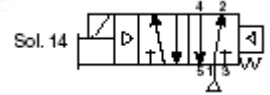
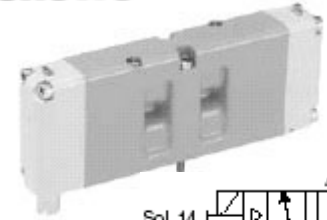
STOCK NO. SD03960
1/4" PORTS, 2-POSITION,
SINGLE SOLENOID,
SUB BASE MOUNTED, 120 VAC

MODEL NO. HA1VXBG023A
P5561153C ASSEMBLY



STOCK NO. SD03980
1/2", 4-WAY, 5-PORT, 3-POSITION,
DOUBLE SOLENOID, SPRING CENTERED,
PLUG IN

MODEL NO. H26VXBG023C
PS4111-17 ACP ASSEMBLY



STOCK NO. SD03965
1/4", 4-WAY, 5-PORT, 2-POSITION,
SPRING RETURN, SINGLE SOLENOID,
SUB BASE MOUNTED

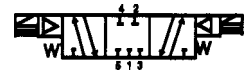
MODEL NO. HB1VXBG023A
PS561153C ASSEMBLY

VALVEAIR III B5 SERIES



STOCK NO. SD03315
3/8", 4-WAY, 5-PORT,
3-POSITION,
DOUBLE SOLENOID,
DIN CONNECTORS

STOCK NO. SD03305
3/8", 4-WAY,
5-PORT, 2-POSITION,
SINGLE SOLENOID,
AIR SPRING,
DIN CONNECTOR



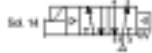
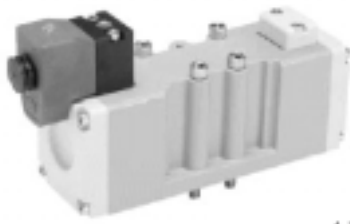
AIR VALVES - SOLENOID					ORDER INFORMATION		
PORT SIZE	Cv	SOLENOID	PLUMBING & ELECTRICAL STYLE	MODEL NUMBER	STOCK NUMBER	PRICE	
1/8"	.6	SINGLE	2-Position, Body Ported, DIN Connector	B310BC553C	SD03300	47.70	
1/4"	3.0	SINGLE	2-Position, Sub Base Mount, DIN, Dir. Valve, 120 VAC	H2EVXBG023C	SD03975	108.80	
1/4"	2.8	DOUBLE	3-Position, Sub Base Mount, DIN, Dir. Valve, 120 VAC	H26VXBG023C	SD03980	168.10	
1/4"	1.1	SINGLE	2-Position, Sub Base Mount, DIN, Dir. Valve, 120 VAC	HA1VXBG023A	SD03960	62.40	
1/4"	.55	SINGLE	2-Position, Sub Base Mount, DIN, Dir. Valve, 120 VAC	HB1VXBG023A	SD03965	59.90	
1/4"	1.0	DOUBLE	3-Position, Sub Base Mount, DIN, Dir. Valve, 120 VAC	HA6VXBG023C	SD03962	107.20	

GRAND RAPIDS

TOLL FREE 1-800-968-0188
PHONE: (616) 949-8844
FAX: (616) 949-6598

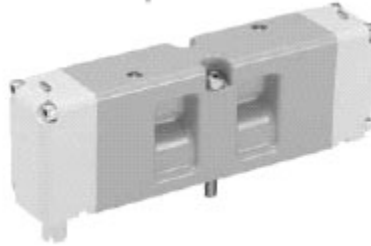
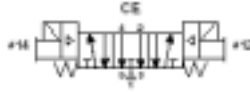
KALKASKA

TOLL FREE 1-800-355-4338
PHONE: (616) 258-4338
FAX: (616) 258-2696



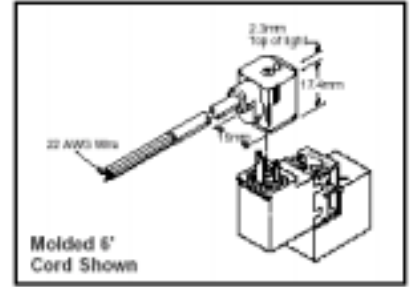
STOCK NO. SD03975
FOR USE WITH SPRINT SERIES VALVES,
SINGLE SOLIENOID, 2-POSITION, PORT
SIZE 1/2"

MODEL NO. H2EVXBG023C
PS4111-17ACP ASSEMBLY



STOCK NO. SD03962
FOR USE WITH SPRINT SERIES VALVES,
DOUBLE SOLENOID

MODEL NO. HA6VXBG023C
PS511-13CP ASSEMBLY



15mm 3-Pin DIN 43650C (Use with Enclosure '5')

Connector	Connector with 6' (2m) Cord	Description
PS24678BP	PS24678BP	Unlighted
PS24678BP	PS24678BP*	Light - 12VAC or DC
PS24678BP	PS24678BP*	Light - 24VAC or DC
PS24681BP	PS24681BP*	Light - 120/230VAC
PS24681BP	N/A	Light - 240/230VAC

***LED WITH SURGE SUPPRESSION.**

NOTE: Max 06.5mm (22 gage wire) cable size required for connector w/o 6' (2m) cord. IP65 rated when properly installed.

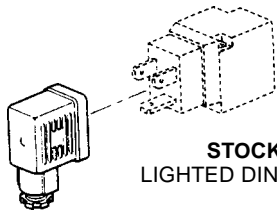
Engineering Data:

Conductors: 2 Poles Plus Ground
Cable Range (Connector Only): 4 to 6mm (0.16 to 0.24 Inch)
Contact spacing: 8mm

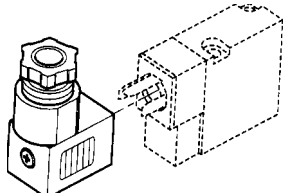
STOCK NO. SD07159

Price: \$16.00

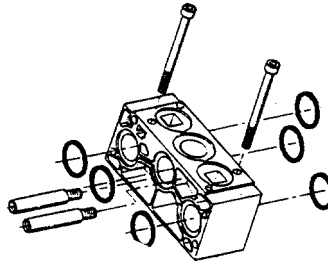
DIN CONNECTORS



22mm 33in
STOCK NO. SD07000
LIGHTED DIN CONNECTOR



STOCK NO. SD07158
FOR USE WITH 1/8" DIN VALVAIR III VALVES
18MM



STOCK NO. SD07105
FOR USE WITH VALVAIR III SERIES.

GENERAL INFORMATION

All the Valve accessories on this page are chosen to correspond with the Valves on the preceding page. In addition, we have many other valves and accessories In-Stock — just call customer service.

When you see a dash, it means that that particular valve does not match with that particular accessory.

***SPEED CONTROLS, MUFFLERS, AND SILENCERS CAN BE FOUND ON PAGES 13 & 14.**

DIRECTIONS FOR CHOOSING VALVE ACCESSORIES

1. Find your FRL Stock No. (previous sections)
2. Next, find that same stock no. below
3. Accessories on that line are correct

AIR VALVE ACCESSORIES - SOLENOID

ORDER INFORMATION

VALVE STOCK NUMBER	DIN CONNECTORS		MANIFOLD BASE KITS		END PLATES	
	STOCK NUMBER	PRICE	STOCK NUMBER	PRICE	STOCK NUMBER	PRICE
SD03300	SD07158	11.70	—	—	—	—
SD03304	SD07158	11.70	—	—	—	—
SD03325	SD07158	11.70	SD07105	8.60	SD07100	17.70
SD03305	SD07000	13.90	SD07105	8.60	SD07100	17.70
SD03315	SD07000	13.90	SD07105	8.60	SD07100	17.70

GRAND RAPIDS

TOLL FREE 1-800-968-0188
PHONE: (616) 949-8844
FAX: (616) 949-6598

KALKASKA

TOLL FREE 1-800-355-4338
PHONE: (616) 258-4338
FAX: (616) 258-2696

alcon

1/4" THRU 1"



STOCK NO. AV01240
1/2", BRASS BODY, 2-WAY, NORMALLY CLOSED

STOCK NO. AV01245
3/4", BRASS BODY, 2-WAY, NORMALLY CLOSED



STOCK NO. AV01085
BRASS BODY, 1/4", 2-WAY, NORMALLY CLOSED, DIRECT ACTING SOLENOID VALVE

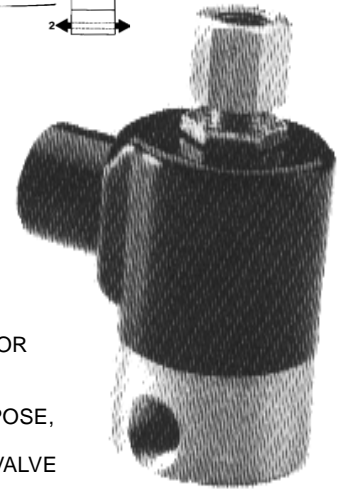
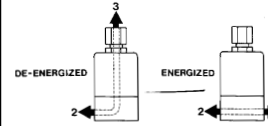
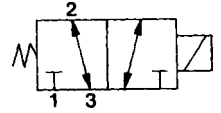
APPLICATION

Used to provide on/off control of air, water, gases and light oil.



STOCK NO. AV01250
1", BRASS BODY, 2-WAY, NORMALLY CLOSED

Parker Schrader Bellows



STOCK NO. SD03000
1/4", 3-WAY OR 2-WAY, 2 POSITION, MULTI-PURPOSE, CYCLONE, SOLENOID VALVE

APPLICATION

Used to provide on/off control of inert liquids and gases in 2-way configuration and for pilot signals to larger valves in 3-way configuration.

GENERAL INFORMATION

All Valves are 120v/60Hz and come with conduit connectors. For other voltages, consult Customer Service.

GENERAL PURPOSE VALVE						ORDER INFORMATION	
PORT SIZE	CV (FLOW)	OPERATING PSI (MAX)	MEDIA TEMP	MEDIA	REFERENCE	STOCK NUMBER	PRICE
1/4"	.53	105	TO 300°F	AIR, WATER, INERT GAS	U21-44-22-12	AV01085	56.00
1/4"	.10	100	TO 300°F	AIR, WATER, INERT GAS	745130115B	SD03000	68.00
1/2"	4.9	150	TO 300°F	AIR, WATER, INERT GAS	UACD4V	AV01240	109.00
3/4"	6.3	150	TO 300°F	AIR, WATER, INERT GAS	UACD6V	AV01245	111.00
1"	14.7	150	TO 300°F	AIR, WATER, INERT GAS	UACD7V	AV01250	214.00
*OPTIONAL: COIL FOR ALCON GENERAL PURPOSE VALVES						AV60085	31.50

GRAND RAPIDS

TOLL FREE 1-800-968-0188
PHONE: (616) 949-8844
FAX: (616) 949-6598

KALKASKA

TOLL FREE 1-800-355-4338
PHONE: (616) 258-4338
FAX: (616) 258-2696