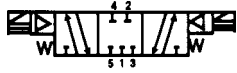




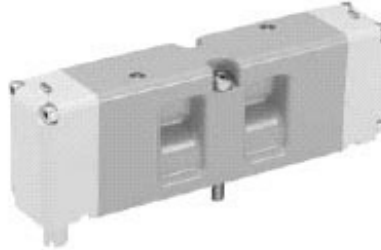
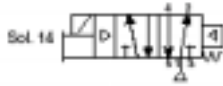
## SPRINT SERIES



### B 3 SERIES

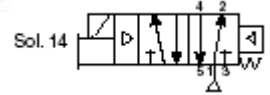
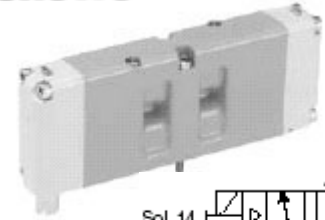


**STOCK NO. SD03302**  
1/8", 4-WAY, 5-PORT, 3-POSITION, DOUBLE SOLENOID, SPRING CENTERED, WITH OR WITHOUT DIN CONNECTORS



**STOCK NO. SD03960**  
1/4" PORTS, 2-POSITION, SINGLE SOLENOID, SUB BASE MOUNTED, 120 VAC

MODEL NO. HA1VXBG023A  
P5561153C ASSEMBLY



**STOCK NO. SD03965**  
1/4", 4-WAY, 5-PORT, 2-POSITION, SPRING RETURN, SINGLE SOLENOID, SUB BASE MOUNTED

MODEL NO. HB1VXBG023A  
PS561153C ASSEMBLY

### VALVEAIR III B5 SERIES

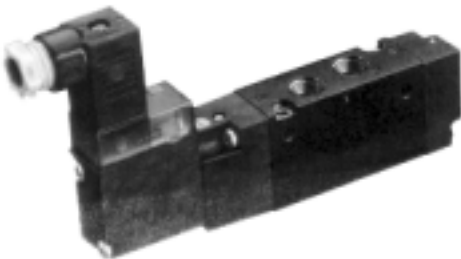
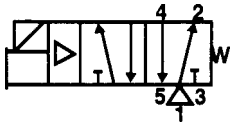


**STOCK NO. SD03305**

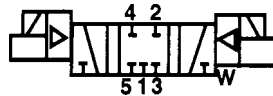
3/8", 4-WAY, 5-PORT, 2-POSITION, SINGLE SOLENOID, AIR SPRING, DIN CONNECTOR



**STOCK NO. SD03315**  
3/8", 4-WAY, 5-PORT, 3-POSITION, DOUBLE SOLENOID, DIN CONNECTORS



**STOCK NO. SD03300**  
1/8", 4-WAY, 5-PORT, 2-POSITION, SINGLE SOLENOID, AIR SPRING RETURN, DIN CONNECTORS



**STOCK NO. SD03980**  
1/2", 4-WAY, 5-PORT, 3-POSITION, DOUBLE SOLENOID, SPRING CENTERED, PLUG IN

MODEL NO. H26VXBG023C  
PS4111-17 ACP ASSEMBLY



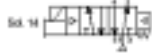
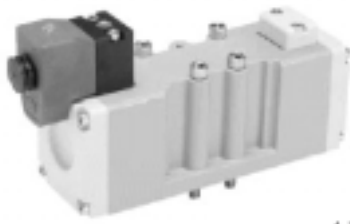
AIR VALVES - SOLENOID					ORDER INFORMATION		
PORT SIZE	Cv	SOLENOID	PLUMBING & ELECTRICAL STYLE	MODEL NUMBER	STOCK NUMBER	PRICE	
1/8"	.6	SINGLE	2-Position, Body Ported, DIN Connector	B310BC553C	SD03300	47.70	
1/4"	3.0	SINGLE	2-Position, Sub Base Mount, DIN, Dir. Valve, 120 VAC	H2EVXBG023C	SD03975	108.80	
1/4"	2.8	DOUBLE	3-Position, Sub Base Mount, DIN, Dir. Valve, 120 VAC	H26VXBG023C	SD03980	168.10	
1/4"	1.1	SINGLE	2-Position, Sub Base Mount, DIN, Dir. Valve, 120 VAC	HA1VXBG023A	SD03960	62.40	
1/4"	.55	SINGLE	2-Position, Sub Base Mount, DIN, Dir. Valve, 120 VAC	HB1VXBG023A	SD03965	59.90	
1/4"	1.0	DOUBLE	3-Position, Sub Base Mount, DIN, Dir. Valve, 120 VAC	HA6VXBG023C	SD03962	107.20	

**GRAND RAPIDS**

TOLL FREE 1-800-968-0188  
PHONE: (616) 949-8844  
FAX: (616) 949-6598

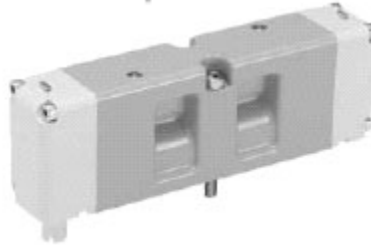
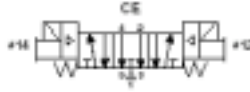
**KALKASKA**

TOLL FREE 1-800-355-4338  
PHONE: (616) 258-4338  
FAX: (616) 258-2696



**STOCK NO. SD03975**  
FOR USE WITH SPRINT SERIES VALVES,  
SINGLE SOLIENOID, 2-POSITION, PORT  
SIZE 1/2"

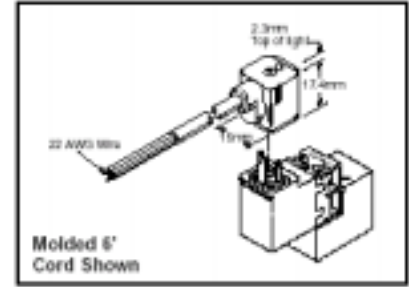
MODEL NO. H2EVXBG023C  
PS4111-17ACP ASSEMBLY



**STOCK NO. SD03962**  
FOR USE WITH SPRINT SERIES VALVES,  
DOUBLE SOLENOID

MODEL NO. HA6VXBG023C  
PS511-13CP ASSEMBLY

### Schrader Bellows®



15mm 3-Pin DIN 43650C (Use with Enclosure "5")

Connector	Connector with 6' (2m) Cord	Description
PS24678BP	PS24678BP	Unlighted
PS24678BP	PS24678BP*	Light - 12VAC or DC
PS24678BP	PS24678BP*	Light - 24VAC or DC
PS24681BP	PS24681BP*	Light - 120/230VAC
PS24681BP	N/A	Light - 240/230VAC

**\*LED WITH SURGE SUPPRESSION.**

**NOTE:** Max 06.5mm (22 gage wire) cable size required for connector w/o 6' (2m) cord. IP65 rated when properly installed.

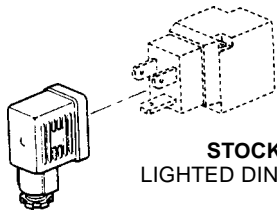
**Engineering Data:**

Conductors: 2 Poles Plus Ground  
Cable Range (Connector Only): 4 to 6mm (0.16 to 0.24 Inch)  
Contact spacing: 8mm

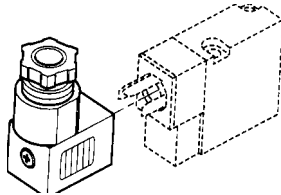
**STOCK NO. SD07159**

Price: \$16.00

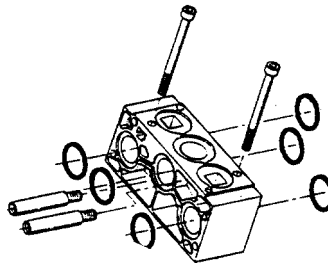
## DIN CONNECTORS



22mm 33in  
**STOCK NO. SD07000**  
LIGHTED DIN CONNECTOR



**STOCK NO. SD07158**  
FOR USE WITH 1/8" DIN VALVAIR III VALVES  
18MM



**STOCK NO. SD07105**  
FOR USE WITH VALVAIR III SERIES.

### GENERAL INFORMATION

All the Valve accessories on this page are chosen to correspond with the Valves on the preceding page. In addition, we have many other valves and accessories In-Stock — just call customer service.

When you see a dash, it means that that particular valve does not match with that particular accessory.

**\*SPEED CONTROLS, MUFFLERS, AND SILENCERS CAN BE FOUND ON PAGES 13 & 14.**

### DIRECTIONS FOR CHOOSING VALVE ACCESSORIES

1. Find your FRL Stock No. (previous sections)
2. Next, find that same stock no. below
3. Accessories on that line are correct

## AIR VALVE ACCESSORIES - SOLENOID

### ORDER INFORMATION

VALVE STOCK NUMBER	DIN CONNECTORS		MANIFOLD BASE KITS		END PLATES	
	STOCK NUMBER	PRICE	STOCK NUMBER	PRICE	STOCK NUMBER	PRICE
SD03300	SD07158	11.70	—	—	—	—
SD03304	SD07158	11.70	—	—	—	—
SD03325	SD07158	11.70	SD07105	8.60	SD07100	17.70
SD03305	SD07000	13.90	SD07105	8.60	SD07100	17.70
SD03315	SD07000	13.90	SD07105	8.60	SD07100	17.70

**GRAND RAPIDS**

TOLL FREE 1-800-968-0188  
PHONE: (616) 949-8844  
FAX: (616) 949-6598

**KALKASKA**

TOLL FREE 1-800-355-4338  
PHONE: (616) 258-4338  
FAX: (616) 258-2696

# alcon

## 1/4" THRU 1"



**STOCK NO. AV01240**  
1/2", BRASS BODY, 2-WAY, NORMALLY CLOSED

**STOCK NO. AV01245**  
3/4", BRASS BODY, 2-WAY, NORMALLY CLOSED



**STOCK NO. AV01085**  
BRASS BODY, 1/4", 2-WAY, NORMALLY CLOSED, DIRECT ACTING SOLENOID VALVE

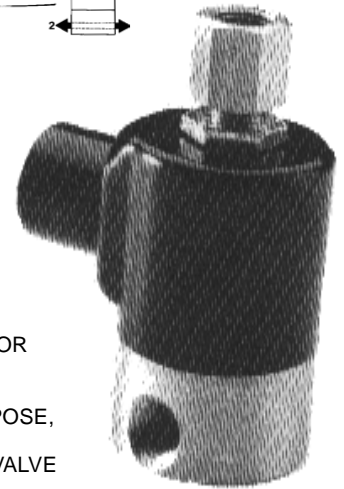
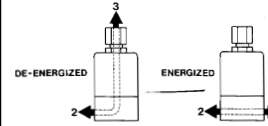
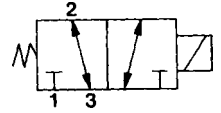
### APPLICATION

Used to provide on/off control of air, water, gases and light oil.



**STOCK NO. AV01250**  
1", BRASS BODY, 2-WAY, NORMALLY CLOSED

# Parker Schrader Bellows



**STOCK NO. SD03000**  
1/4", 3-WAY OR 2-WAY, 2 POSITION, MULTI-PURPOSE, CYCLONE, SOLENOID VALVE

### APPLICATION

Used to provide on/off control of inert liquids and gases in 2-way configuration and for pilot signals to larger valves in 3-way configuration.

## GENERAL INFORMATION

All Valves are 120v/60Hz and come with conduit connectors. For other voltages, consult Customer Service.

GENERAL PURPOSE VALVE						ORDER INFORMATION	
PORT SIZE	CV (FLOW)	OPERATING PSI (MAX)	MEDIA TEMP	MEDIA	REFERENCE	STOCK NUMBER	PRICE
1/4"	.53	105	TO 300°F	AIR, WATER, INERT GAS	U21-44-22-12	AV01085	56.00
1/4"	.10	100	TO 300°F	AIR, WATER, INERT GAS	745130115B	SD03000	68.00
1/2"	4.9	150	TO 300°F	AIR, WATER, INERT GAS	UACD4V	AV01240	109.00
3/4"	6.3	150	TO 300°F	AIR, WATER, INERT GAS	UACD6V	AV01245	111.00
1"	14.7	150	TO 300°F	AIR, WATER, INERT GAS	UACD7V	AV01250	214.00
*OPTIONAL: COIL FOR ALCON GENERAL PURPOSE VALVES						AV60085	31.50

**GRAND RAPIDS**

TOLL FREE 1-800-968-0188  
PHONE: (616) 949-8844  
FAX: (616) 949-6598

**KALKASKA**

TOLL FREE 1-800-355-4338  
PHONE: (616) 258-4338  
FAX: (616) 258-2696

# TWO HAND CONTROL

PNEUMATICS

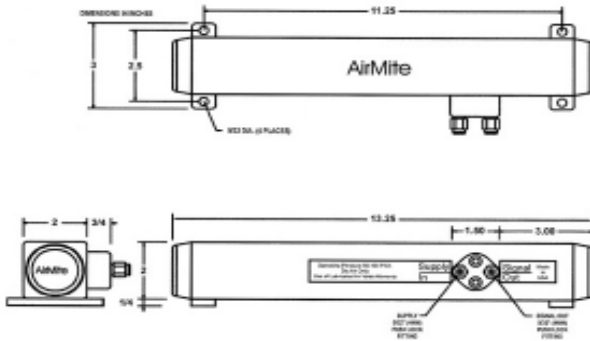
**FEATURES:**

- The pre-assembled two-hand control enclosure occupies both hands of an operator by requiring nearly simultaneous operation of two push-buttons.
- Poppet - snap-acting (no spools).
- Same air as in cylinders - Filtration: 40 micron.
- No lubrication required.



PNEUMATIC AUTOMATION COMPONENTS

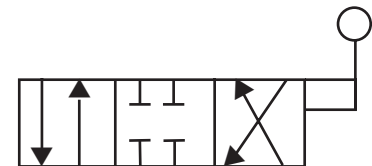
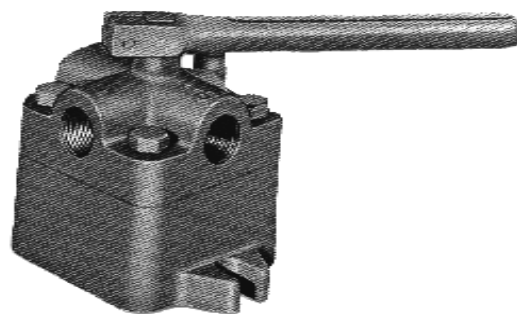
Part number: SC3000



# HAND VALVES

PNEUMATICS

**FOUNDRY TOUGH DISC TYPE**



**INFORMATION AND APPLICATION**

This four way valve has two cycles of operation and is generally used to actuate cylinders. It is fitted with grease cups to lubricate lapped surfaces. These valves are practically indestructible and have a great record for: efficiency, trouble-free operation, freedom from leakage and pressure loss, and long service life.

HAND VALVE DESCRIPTION				ORDER INFORMATION	
PORT SIZE	MAX PSI	TYPE	REFERENCE	STOCK NUMBER	PRICE
1/4"	250	H4A2	NQ80002	NQ80002	47.80
3/8"	250	H4A3	NQ80003	NQ80003	65.00
1/2"	250	H4A4	NQ80004	NQ80004	65.00

**GRAND RAPIDS**  
TOLL FREE 1-800-968-0188  
PHONE: (616) 949-8844  
FAX: (616) 949-6598

**KALKASKA**  
TOLL FREE 1-800-355-4338  
PHONE: (616) 258-4338  
FAX: (616) 258-2696

**PORT HURON**  
TOLL FREE 1-800-583-1818  
FAX: (810) 982-0501

**CANADA**  
PHONE: (905) 332-1500  
FAX: (905) 332-9122