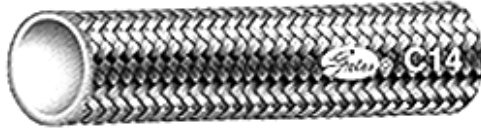


TEFLON HOSE WITH STAINLESS BRAID

HYDRAULICS



- HIGH & EXTREME TEMPERATURE RANGE
-100° TO 500°F
- PRESSURE RATING TO 3000 P.S.I. WITH A 4:1
SAFETY BURST FACTOR (TO 12,000 P.S.I.)
- EXCELLENT FOR HOT OILS, & STEAM, PURIFIED
WATER AND MOST CHEMICALS

MEDIUM PRESSURE TEFLON HOSE						ORDER INFORMATION	
HOSE I.D. (in.)	HOSE O.D. (in.)	WORKING PRESSURE	MIN. BURST PRESSURE	BEND RADIUS (in.)	REFERENCE	STOCK NUMBER	PRICE
3/16"	.31	1,500	10,000	2	4C14	GB00832	6.71
1/4"	.38	1,500	9,000	3	5C14	GB00833	7.06
5/16"	.45	1,500	8,000	4	6C14	GB00834	8.35
13/32"	.55	1,000	6,000	5.25	8C14	GB00835	10.69
1/2"	.65	800	6,000	6.5	10C14	GB00836	13.28
5/8"	.79	800	5,000	7.75	12C14	GB00837	15.54
7/8"	1.03	800	3,500	9	16C14	GB00838	22.64

BRASS FITTINGS FOR TEFLON/STAINLESS HOSE

HYDRAULICS



MALE PIPE

MALE PIPE FITTING			ORDER INFORMATION	
HOSE SIZE	THREAD SIZE	REFERENCE	STOCK NUMBER	PRICE
3/16"	1/8-27	4C14-2MPB	GA85470	9.78
5/16"	1/4-18	6C14-4MPB	GA85500	11.08
13/32"	3/8-18	8C14-6MPB	GA85520	11.83
1/2"	1/2-14	10C14-8MPB	GA85540	19.56
5/8"	3/4-14	12C14-12MPB	GA85545	22.82
7/8"	1-1/2-11	16C14-16MPB	GA85560	35.60



FEMALE SWIVEL
JIC

FEMALE SWIVEL			ORDER INFORMATION	
HOSE SIZE	THREAD	REFERENCE	STOCK NUMBER	PRICE
3/16"	7/16-20	4C14-4FJSXB	GA85570	7.22
5/16"	9/16-18	6C14-6FJSXB	GA85590	9.78
13/32"	3/4-16	8C14-8FJSXB	GA85600	10.50
1/2"	7/8-14	10C14-10FJSXB	GA85610	16.31
5/8"	1 1/16-12	12C14-12FJSXB	GA85620	21.62
7/8"	1 5/16-12	16C14-16FJSXB	GA85630	32.71

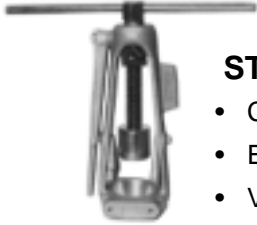
GRAND RAPIDS

TOLL FREE 1-800-968-0188
PHONE: (616) 949-8844
FAX: (616) 949-6598

KALKASKA

TOLL FREE 1-800-355-4338
PHONE: (616) 258-4338
FAX: (616) 258-2696

MAKE HOSE ASSEMBLIES ON THE JOB SITE



STOCK NO. SZ00300

- Convenient
- Economical
- Versatile
- Reliable
- Portable
- Rugged

SWAGING TOOL		ORDER INFORMATION	
FOR HOSE SIZES	REFERENCE	STOCK NUMBER	PRICE
1/8" TO 1"	4530-01002	SZ00300	312.00

NOTE: DIES & PUSHERS FOR SWAGING TOOL ARE IN-STOCK. JUST CALL CUSTOMER SERVICE

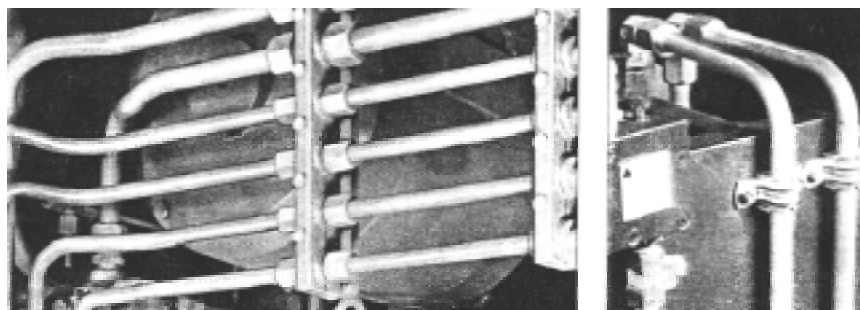
INSTALLATIONS - TUBING

SUPPORT SERVICES

GREAT LAKES HYDRAULICS:

BENDS TUBING, FLARES TUBING, FITS TUBING, AND WE'LL INSTALL TUBING!

- CUSTOM WORK AT COMMODITY PRICES •



- System design & installation
- System trouble shooting & onsite repair
- 24 hr. emergency service available

Just ask for: **GLH RUSH REPAIR SERVICES**

(616)949-8844

or toll free 1-800-968-0188

NOBODY SERVICES & SUPPORTS

YOUR BUSINESS BETTER

Steel and stainless steel tubing, through 2", in-stock.

GRAND RAPIDS

TOLL FREE 1-800-968-0188
PHONE: (616) 949-8844
FAX: (616) 949-6598

KALKASKA

TOLL FREE 1-800-355-4338
PHONE: (616) 258-4338
FAX: (616) 258-2696

TUBE CUTTER

HYDRAULICS



STOCK NO. FP11550
For 1/8" to 1-1/8" OD tubing

SWAGING TOOL		ORDER INFORMATION	
TYPE	REFERENCE	STOCK NUMBER	PRICE
1/8" TO 1-1/8" TUBING	TC1000	FP11550	34.28

GENERAL INFORMATION

Rollers have flare cut-off groove, fold away reamer and spare cutting wheel

TEFLON TAPE

HYDRAULICS



GENERAL INFORMATION

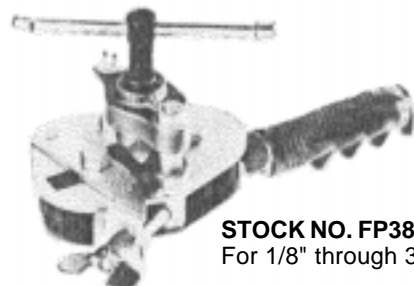
Pure teflon. Use on steam, water, acid, alkali, chemicals, fuel, corrosives, solvent, ketone, refrigerant gas, plastic, glass, stainless steel, aluminum, brass, and ceramic threads.

STOCK NO. FP31500
1/2" x 520", -250°F to 500°F
Crush proof spool.

TEFLON TAPE		ORDER INFORMATION	
TYPE	REFERENCE	STOCK NUMBER	PRICE
1/4" X 520"	TEFLON TAPE	FP31245	.99
1/2" X 520"	TEFLON TAPE	FP31500	.99

MANUAL FLARING TOOL- 37 STANDARD

HYDRAULICS



STOCK NO. FP38900
For 1/8" through 3/4" O.D.

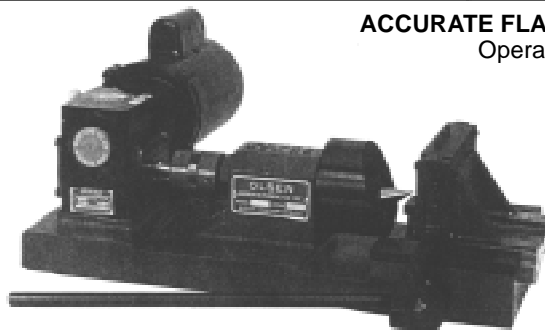
GENERAL INFORMATION

Precision burnished 37° flares for soft metal tubing (copper and aluminum alloy). Depth gauge automatically positions tube for correct flare.

37° FLARING TOOL		ORDER INFORMATION	
FOR O.D. SIZES (in.)	REFERENCE	STOCK NUMBER	PRICE
1/8,3/16,1/4,5/16,3/8,1/2 5/8,3/4	212FB	FP38900	122.00

POWER FLARE KIT- 37 STANDARD

HYDRAULICS



ACCURATE FLARES, FAST FLARES & EASY TO OPERATE

Operates on standard 115V current - Just plug it in!
Up to 11,000psi leak free operation

POWER FLARE KIT INCLUDES:

- 1- Power flare machine
- 2- 37° flaring cones (good for 1/8" to 2")
- 8- Flaring dies (1/4", 3/8", 1/2", 5/8", 3/4", 1", 1-1/4", 1-1/2")

GENERAL INFORMATION

Flare machine comes complete with 1/3hp, 115/230 volt, 60Hz motor; on-off toggle switch, four foot electrical cord, bench model; tooling capacity from 1/8" to 2". Meets MS- 33584.

POWER FLARE KIT				ORDER INFORMATION	
FLARING CONES INCLUDED	FLARING DIES INCLUDED	ELECTRICAL	REFERENCE	STOCK NUMBER	PRICE
37° SMALL(1/8"- 1-1/2") 37° MEDIUM(1"-2")	1/4", 3/8", 1/2", 5/8", 3/4", 1", 1-1/4", 1-1/8"	115V/60Hz	MODEL 50	POR	4,681.00

NOTE: OTHER DIES, CONES, MODELS, & DEBURRING EQUIPMENT AVAILABLE- JUST CALL OUR CUSTOMER SERVICE DEPARTMENT

GRAND RAPIDS

TOLL FREE 1-800-968-0188
PHONE: (616) 949-8844
FAX: (616) 949-6598

KALKASKA

TOLL FREE 1-800-355-4338
PHONE: (616) 258-4338
FAX: (616) 258-2696